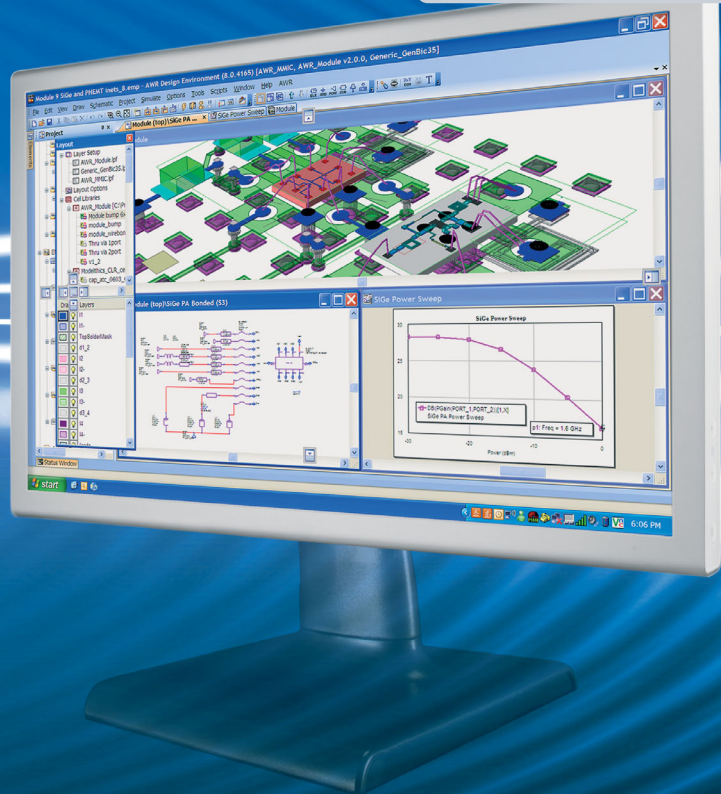


www.awrcorp.com

AWR
Design
Environment™

Product
Guide
2008



Advancing the
wireless revolution™





Microwave Office 2008

Microwave Office® design suite is the industry's fastest growing RF/microwave design platform—and for good reason: it seamlessly integrates the industry's most powerful, innovative tools that let you bring your creations to life in the shortest time with the greatest flexibility. From design capture and synthesis to simulation, optimization, layout, extraction, and verification, the Microwave Office design environment delivers the highest levels of accuracy and speed, along with the unique ability to seamlessly integrate third-party tools.

Microwave Office 2008 Highlights:

- ◀ Next generation UI to maximize workable/viewable desktop space
- ◀ ACE™ and APLAC® harmonic balance (HB) engine enhancements with improved integration
- ◀ Enhanced DRC/LVS including links to Mentor Calibre and ICED
- ◀ New process design kits (PDKs) that leverage AWR's latest innovative technologies integrated with the most advanced foundry processes
- ◀ Multi-technology design flow from system to verification

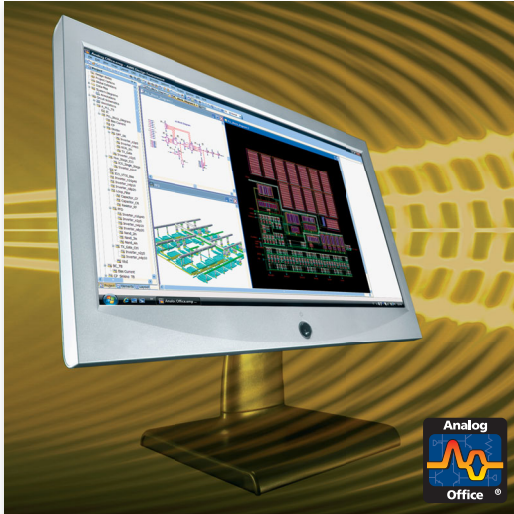
VSS 2008

Visual System Simulator™ (VSS) is a comprehensive software suite for the end-to-end design and optimization of communications systems. VSS lets you craft the best architecture for a communications system and optimize each of its components — and reduce cost by eliminating rework and making sure components are not over specified and unnecessarily expensive. With VSS you can begin at the behavioral level, progress to the component level using Microwave Office or Analog Office®, and use actual device measurements to validate the final design.



VSS 2008 Highlights:

- ◀ Next generation UI to maximize workable/viewable desktop space
- ◀ Enhanced capabilities in RFA™ architectural planning tool including improvements to RF Budget Analysis™ and RF Inspector™
- ◀ Auto-configurable I/Q demodulator that simplifies system analysis
- ◀ Automatic data alignment facilitates bit error rate (BER) simulations
- ◀ Back and forward propagation of time step eliminates the need for manual configuration



Analog Office 2008

The Analog Office® design suite is a complete RFIC design system that is specifically architected from the ground up to provide users with maximum choice when it comes to accessible tools and technologies. Built on the unique high-frequency AWR Design Environment™ with its revolutionary Unified Data Model™ (UDM), Analog Office software delivers unparalleled intuitiveness-of-use, openness, and interoperability, enabling the industry's most productive design flows.

Analog Office 2008 Highlights:

- ◀ Next generation UI to maximize workable/viewable desktop space
- ◀ Seamless integration of APLAC® HB simulator tailored for large-scale and extremely nonlinear RFIC designs
- ◀ Improved iNet™ technology for accurate RF interconnect modeling and analysis throughout the design process
- ◀ Enhanced DRC/LVS with expanded support for Calibre and ICED
- ◀ The latest PDKs developed using IPL/Open Access

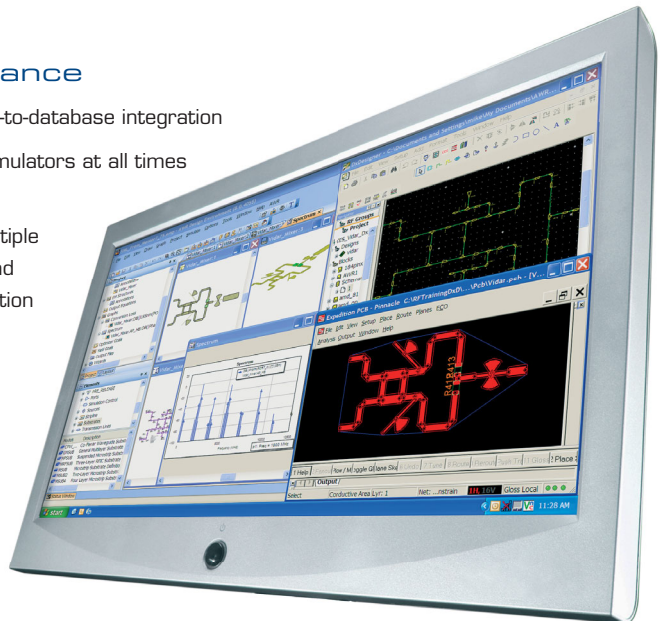
AWR Connected™

Designs done purely on PCBs have been steadily rising in frequency over the last few years as PCB substrate technology has improved giving greater uniformity. RF and microwave sub-circuits previously designed on alumina or Duroid and “dropped in” to the PCB can now be integrated directly into the PCB. Unfortunately the simulation technology needed to take into account dispersive effects, cross coupling and parasitics and other effects prevalent at higher frequencies has until now not been available directly coupled with manufacturing layout and verification tools.

AWR Connected for Mentor Graphics Expedition™ offers for the first time a highly efficient design flow that achieves concurrency between RF/microwave design, electromagnetic (EM) analysis and circuit simulation with PCB library management, digital/analog mixed signal (AMS) implementation, and manufacturing verification.

Features at a Glance

- Full bidirectional database-to-database integration
- Access to AWR circuit simulators at all times in the flow
- Full, incremental, and multiple EM document creation and management from Expedition to AWR
- Release-independent functionality





Corporate Headquarters
AWR Corporation
1960 East Grand Avenue
Suite 430
El Segundo, CA 90245
USA
support@awrcorp.com
www.awrcorp.com

AWR
Design
Environment™

MICROWAVE OFFICE®



VISUAL SYSTEM SIMULATOR™



ANALOG OFFICE®



APLAC®



AXIEM™



Advancing the  wireless revolution™

Copyright © 2008 AWR Corp. All rights reserved. AWR, the AWR logo, Microwave Office, Analog Office and APLAC are registered trademarks and Visual System Simulator, AXIEM and AWR Connected are trademarks of AWR Corp.