

Advancing the  
wireless revolution™

[www.awrcorp.com](http://www.awrcorp.com)

# AWR Design Environment™

**Version 2009 - What's New?**

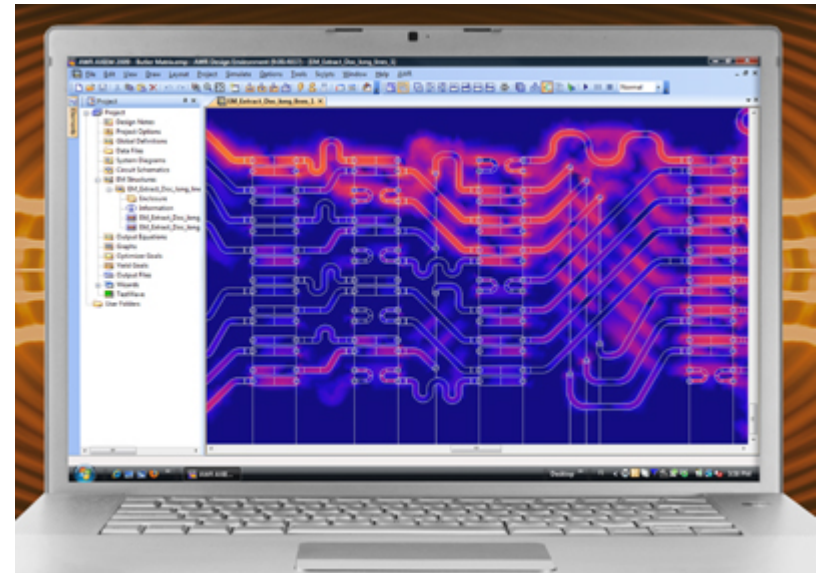


# What's New in AXIEM™ v2009?

Advancing the wireless revolution™

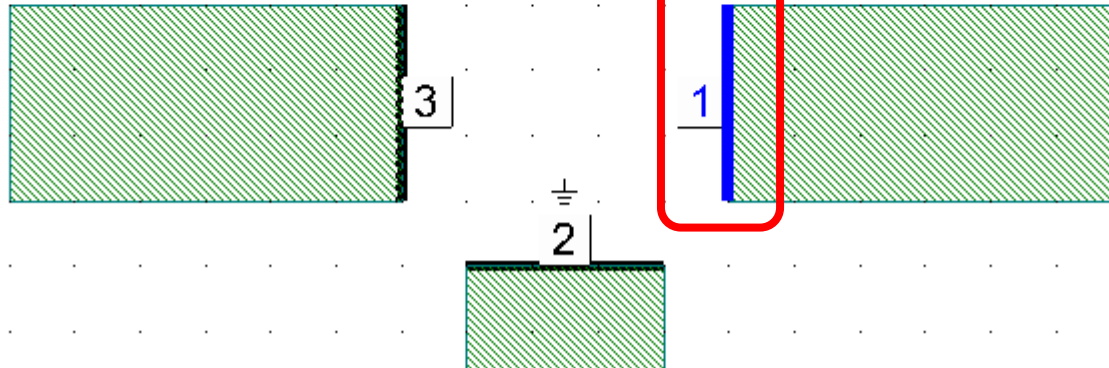
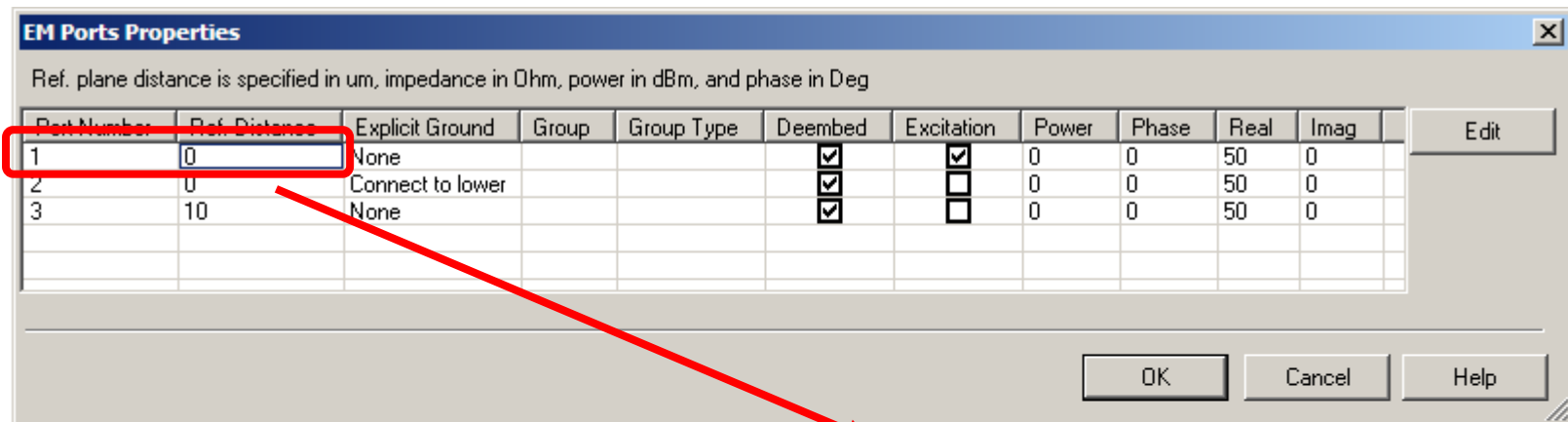
www.awrcorp.com

- New support for 64-bit platforms
- Expanded support for multi-core configurations
- Extensive sources/ports and de-embedding options
  - Internal edge, finite difference/gap and extraction ports
  - Per-port, coupled line and mutual group de-embedding
- Improved adaptive frequency sweep (AFS)
  - Stores only simulated points, not interpolated
  - Improved convergence
- Added many new AXIEM examples



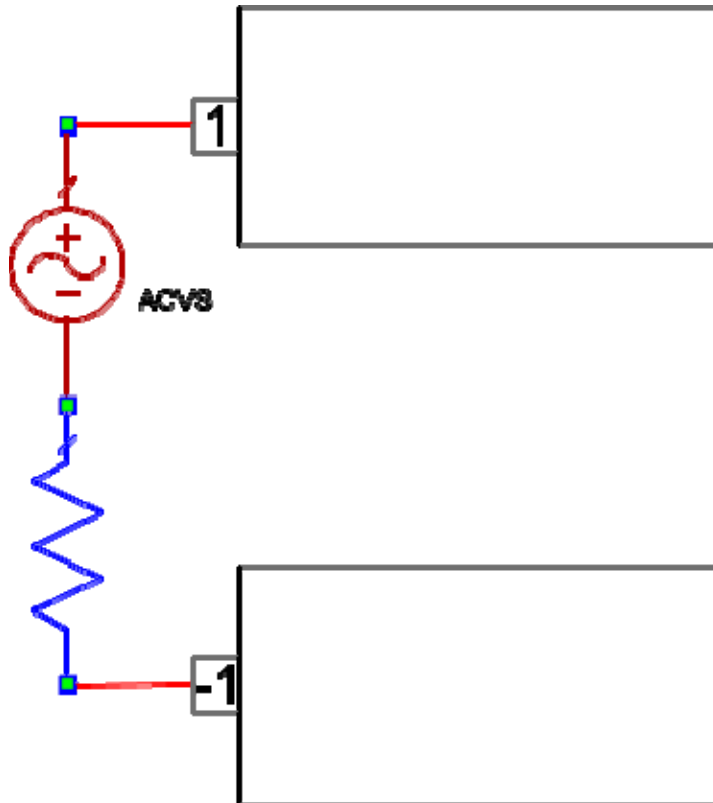
# AXIEM: Improved Port Editing

- Multi select
- Property grid with port highlight / cross probing

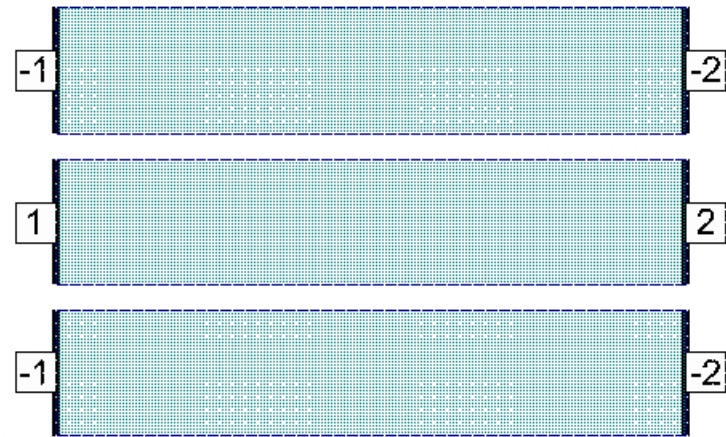


# AXIEM: Differential Ports

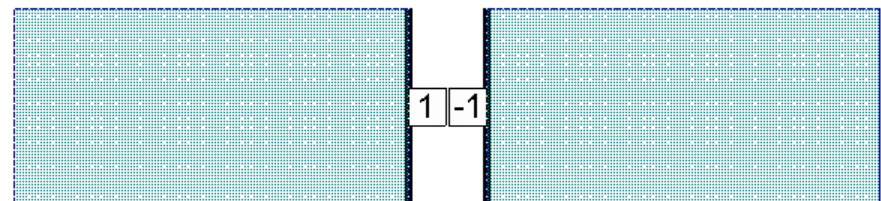
## Explicit Ground Definition



## Coplanar Excitation

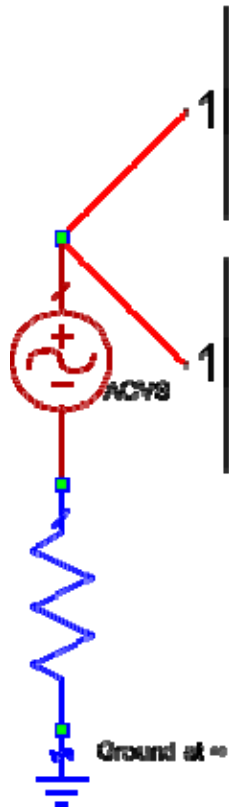


## Small Gaps (SMT parts)

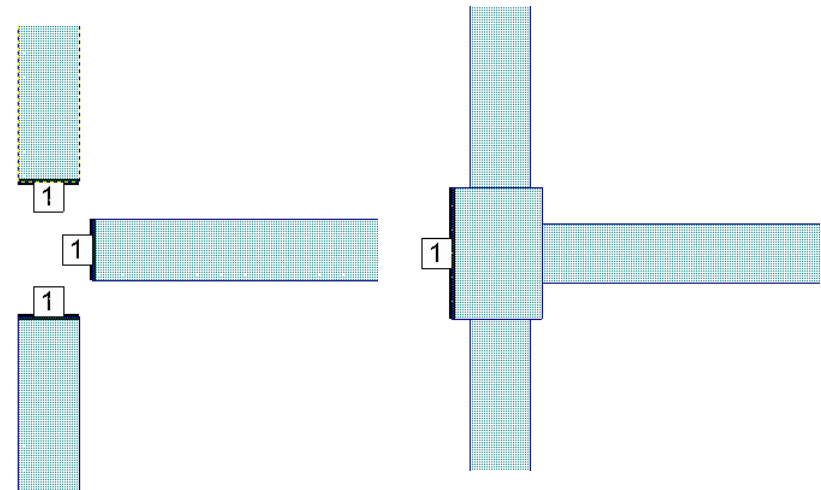


# AXIEM: Multi-Terminal Ports

Same excitation applied  
to multiple nodes



Alternative excitation  
for SMT pad.

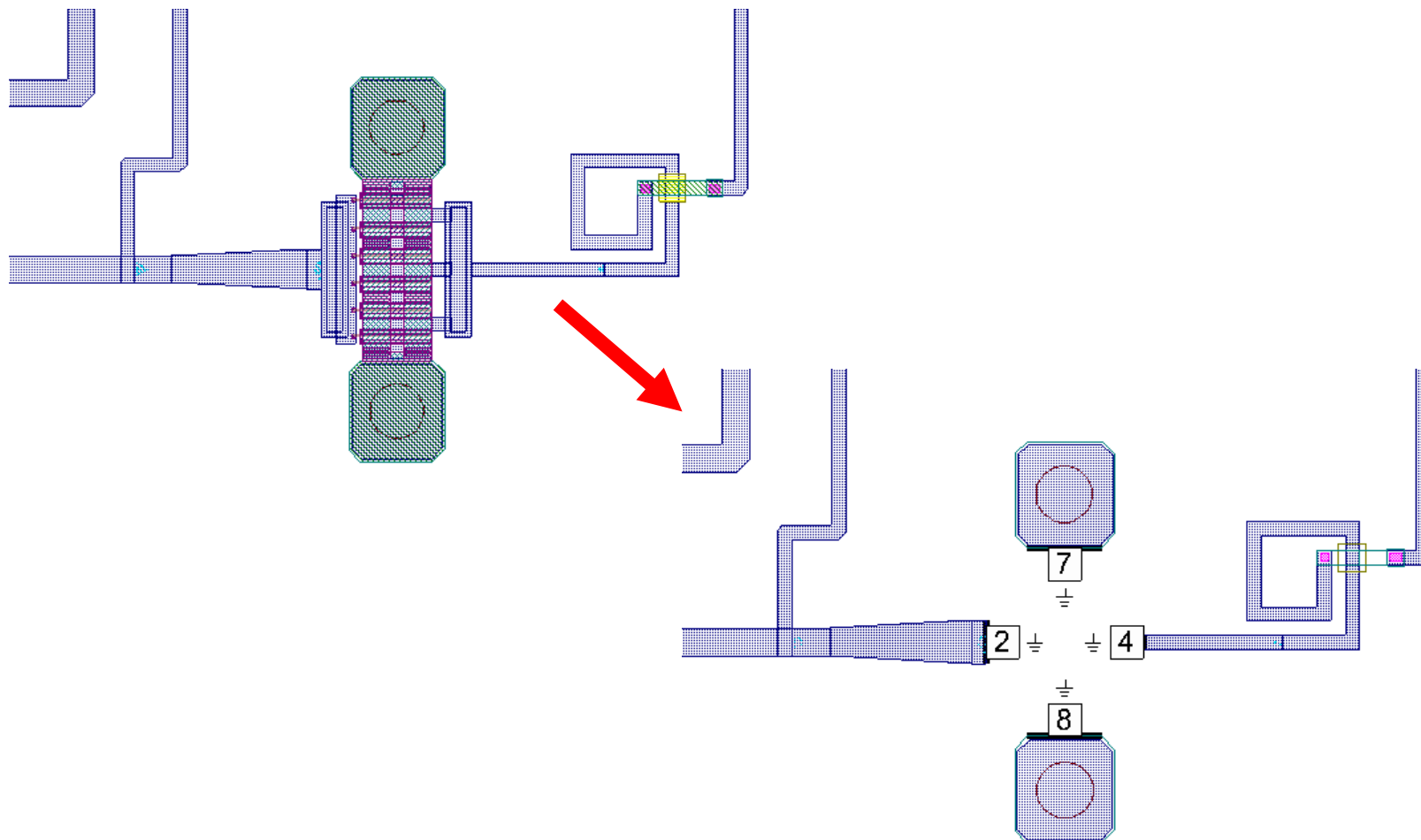


# AXIEM: Mutual Group De-embedding

Advancing the  
wireless revolution™

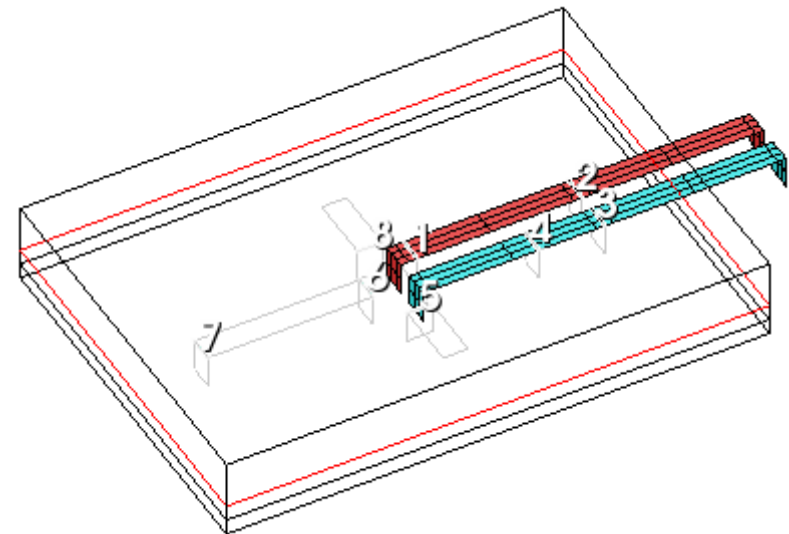
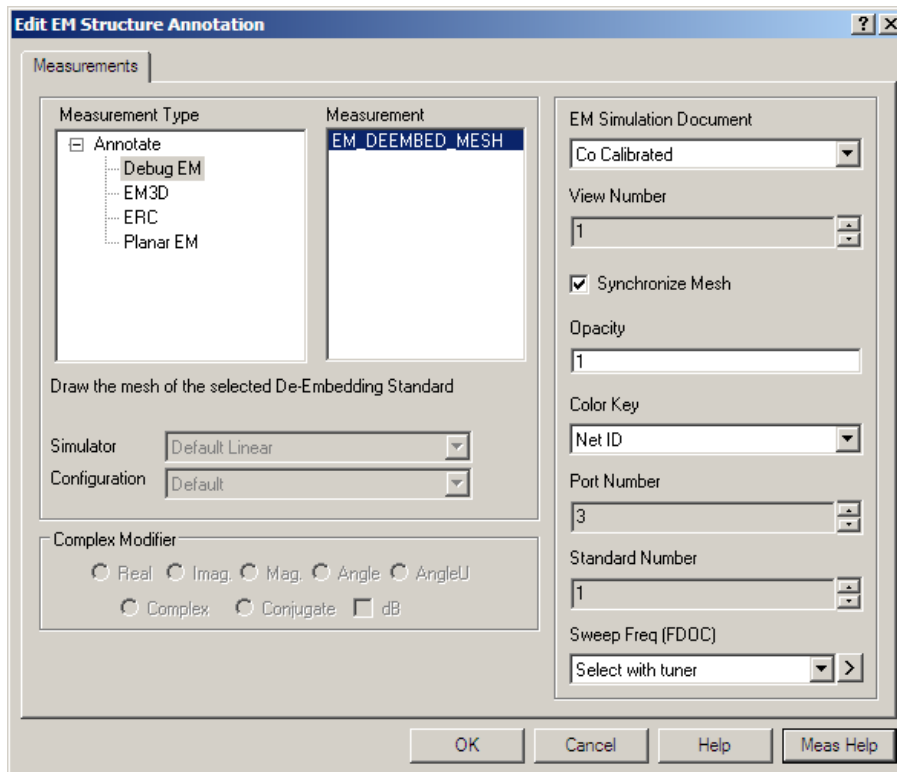
www.awrcorp.com

- Removes coupling or interaction between ports



# AXIEM: De-embedding Mesh

- De-embedding standards can be viewed for verification and trouble shooting

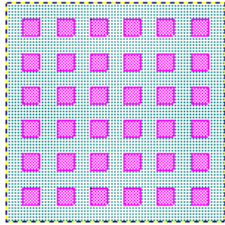


# AXIEM: Shape Preprocessor

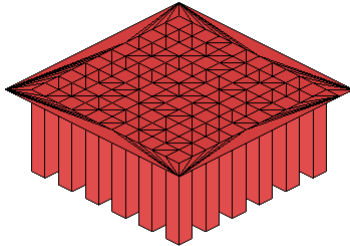
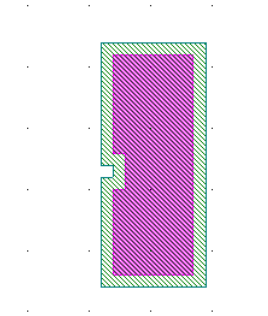
Advancing the wireless revolution™

[www.awrcorp.com](http://www.awrcorp.com)

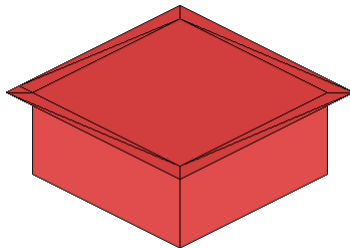
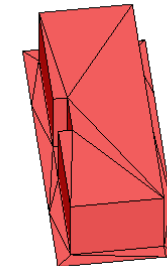
- Cleans up meshed shapes



Original shape



Default mesh



Mesh using shape preprocessor

