

OVERVIEW

As the world becomes more and more wireless, the proliferation of antennas in all shapes and sizes grows too. Enter AWR Connected for Antenna Magus.

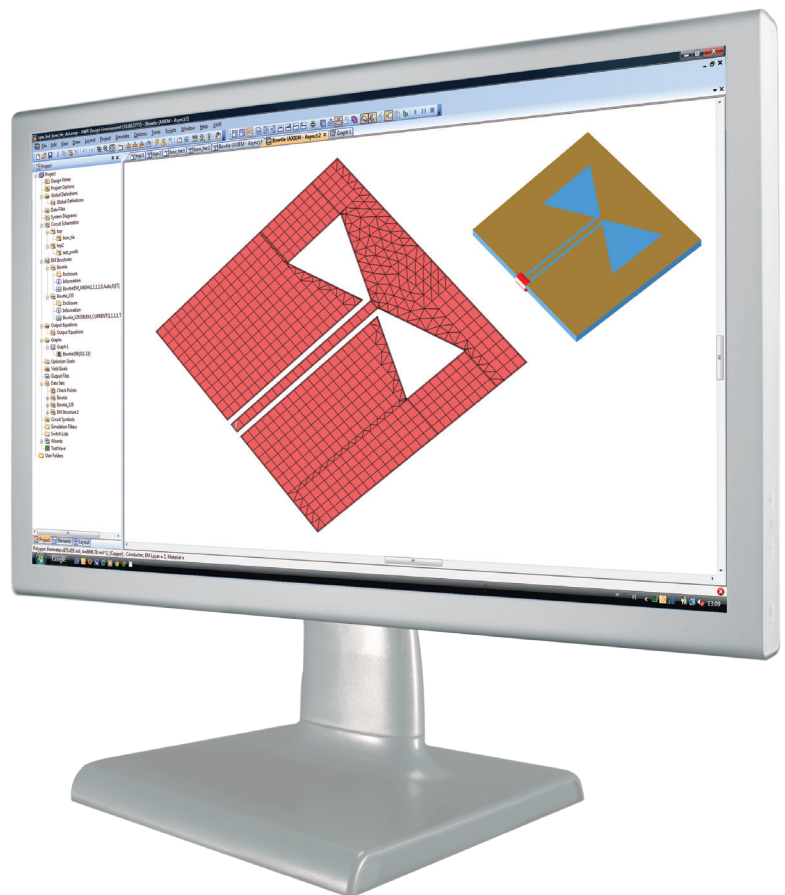
Antenna Magus's software is an expert system for antenna designers and suitable for a broad range of applications. Its expansive database of antennas is targeted at aiding RF/microwave circuit and system designers to get them to the customization phase of an antenna design quickly and reliably.

With AWR Connected for Antenna Magus, validated, parametric models of the initial synthesized antenna design are exported seamlessly into AWR's software and immediately ready for additional characterization and customization (tuning and optimization) within AXIEM® 3D planar simulator.

FEATURES AT A GLANCE

- ◀ Export Mode from Antenna Magus into AWR
- ◀ Export Model option from Antenna Magus includes:
 - Layout of planar antenna
 - Associated material properties
 - Simulation set-up parameters such as frequency
- ◀ AWR project file ready for import into Microwave Office™/AXIEM for antenna analysis and post-processing
 - Antenna measurements, including gain
 - Patterns for linear, circular, and elliptical polarizations
 - Current visualization

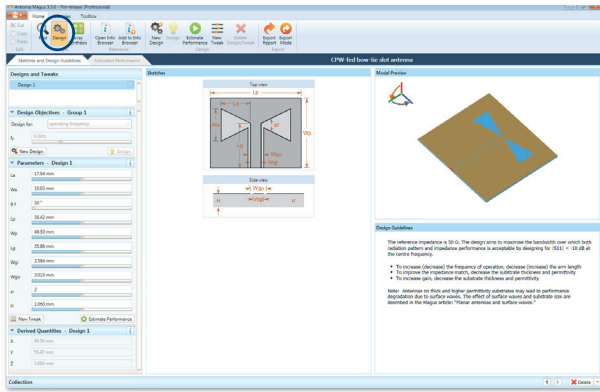
AWR Connected for Antenna Magus helps engineers accelerate the antenna design process. It simplifies the day-to-day work of antenna designers and engineers that create and rely upon EM models.



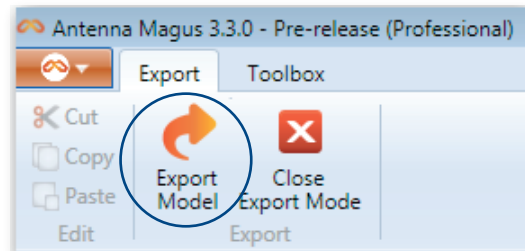
Antenna Synthesis Through
to Circuit/EM Simulation



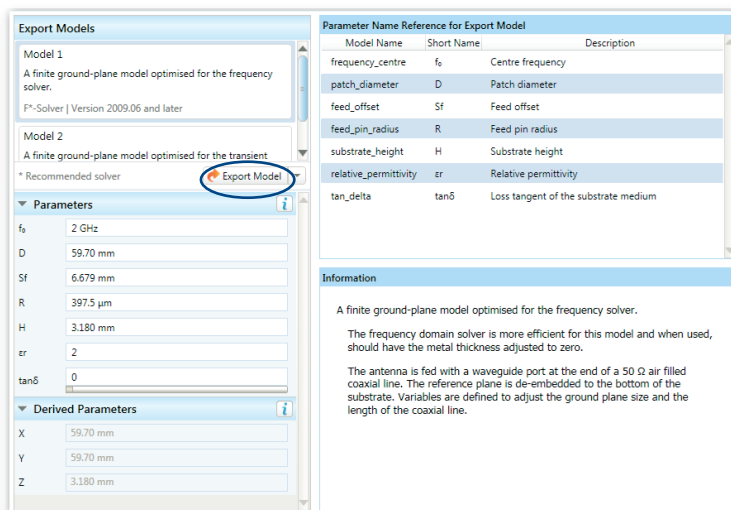
HOW IT WORKS



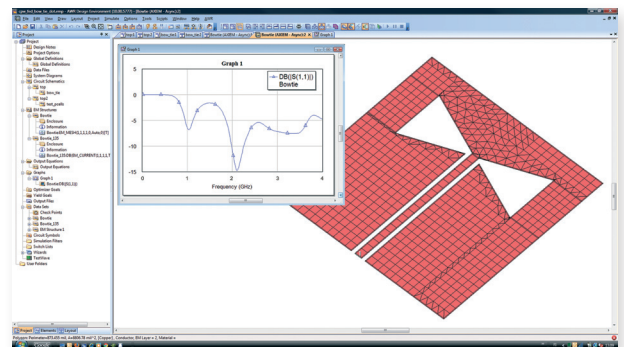
Step 1: Within Antenna Magus, first "Find" desired antenna by choosing among the hundreds of available topologies and then select "Design" to synthesize the antenna performance.



Step 2: With synthesized antenna known, select "Export Model".



Step 3: Lastly, from Antenna Magus, click "Export Model" to prepare synthesized antenna for additional characterization within AWR.



Step 4: From AWR, open file and import. Continue final set-up steps and simulate.

ABOUT ANTENNA MAGUS

Antenna Magus (www.antennamagus.com) is an expert system for antenna design, suitable for a broad range of applications. Its feature set is targeted at aiding engineers to get to the customization phase of an antenna design quickly and reliably. Validated, parametric models of the initial design are exported seamlessly into 3rd party EM simulators, where customization can be done in tried-and-trusted analysis tools.



AWR, 1960 East Grand Avenue, Suite 430, El Segundo, CA 90245, USA
Tel: +1 (310) 726-3000 Fax: +1 (310) 726-3005 www.awrcorp.com

Copyright © 2011 AWR Corporation. All rights reserved. AWR is a National Instruments Company. AWR, AWR logo and AXIEM are registered trademarks and AWR Connected and Microwave Office are trademarks of AWR Corporation. All others are property of their respective holders.